

QUALITY CONSTRUCTION. TRUSTED SERVICE.

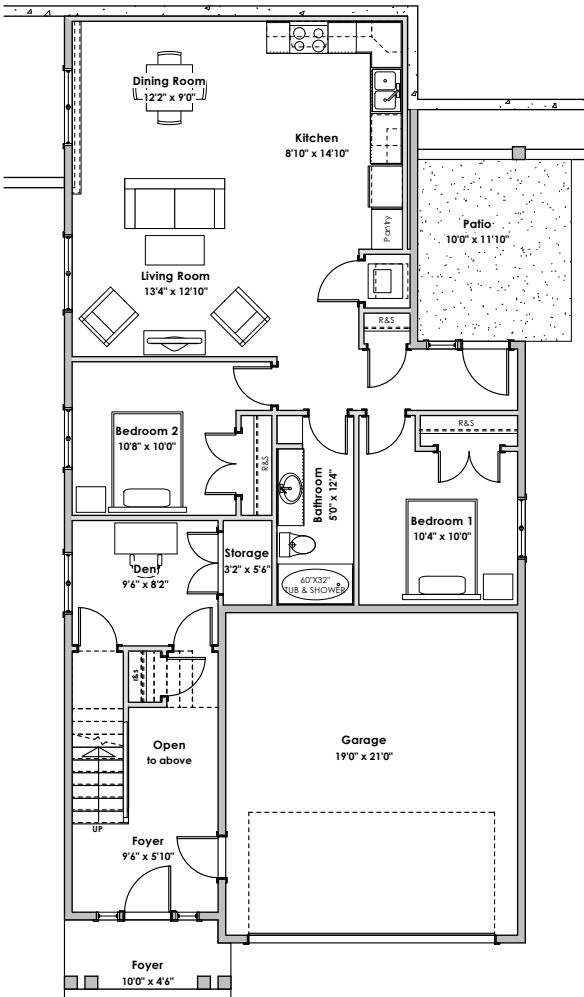
3463 Trumpeter Street

*NOTE: In the interest of maintaining high standards, the developer reserves the right to modify plans, specifications and design without prior notice. Drawings contained within are artist renderings only.

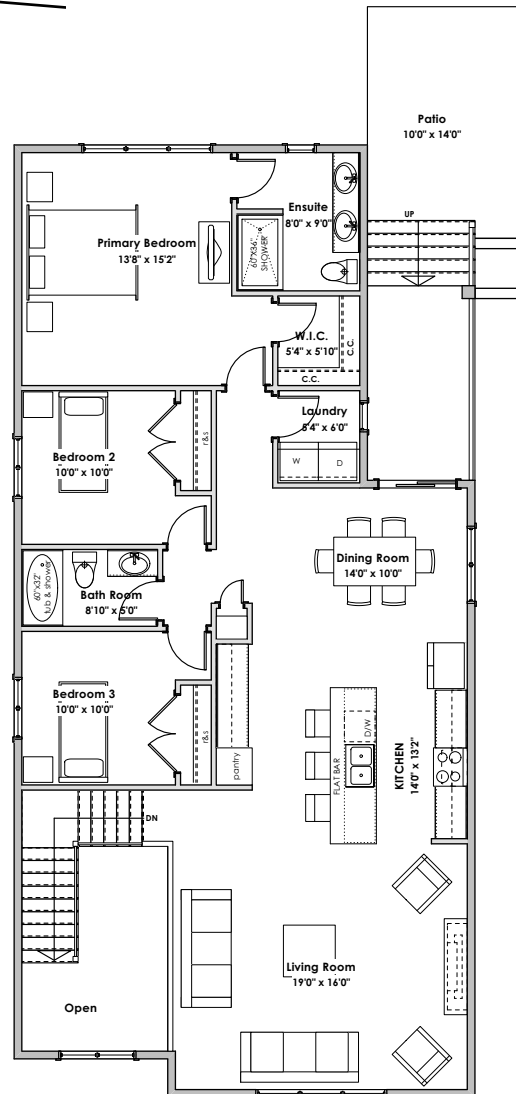
Sizes and dimensions are approximate and may vary with actual plan and survey. Exterior style may change pending municipal approval.

Retaining Wall construction types:
 -Non-mortared boulder wall
 -Concrete Cast in place wall
 -Pre-cast masonry landscape wall
 Retaining walls will be designed, placed and constructed in the sole discretion of the developer

Furniture as shown on plans are for layout purposes only and are not included in the sale.



Lower Floor
 Living: 282 sq.ft.
 Suite: 940 sq.ft.



Main Floor
 Living: 1513 sq.ft.

LIVING AREA	
Primary:	1795 sq.ft.
Suite:	940 sq.ft.
Total:	2735 sq.ft.
OTHER	
Garage:	440 sq.ft.